

 STAIRS

CBT 60Hz



STAIRS INDUSTRIAL CO., LTD.

Multi-stage and Variable Capacity Design:

The centrifugal multi-stage pump design allow selection of different flow and head. Provides steady, quiet, vibration free operation.

O-Ring Casing Seal: Reliable high pressure sealing with easy disassembly for maintenance or repair.

Impeller and Diffusers: Impellers are floating type made with Noryl for superior sand handling.

Together with glass filled polycarbonate diffusers make the pump high resistance to abrasion.

And can be used in multiple applications.

Maximum efficiencies, long useful life and incomparable performance are achieved.

Impeller Bowls/Casing: Made from 304 stainless steel, maximizing wear from abrasion.

Motors: Close coupled motors, totally enclosed design. Single phase and three phase available.

Ball bearings carry all radial and axial thrust loads. Designed for continuous operation.





Application

- Residential, commercial, agricultural water
- Pressure Boosting
- Water circulation
- Reverse osmosis
- Heating, ventilation and air conditioning
- Evaporative cooling systems/misters
- Spray systems
- Filtration

Specification

Pump

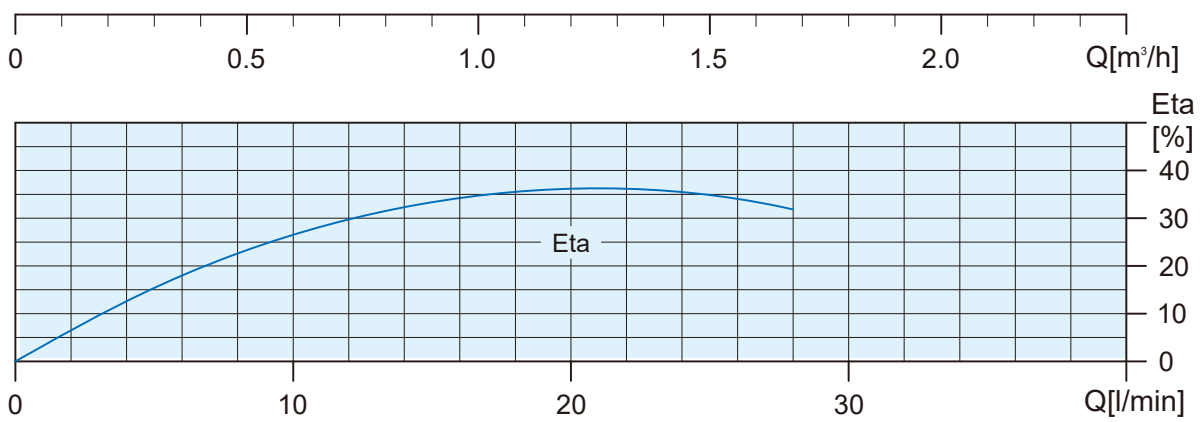
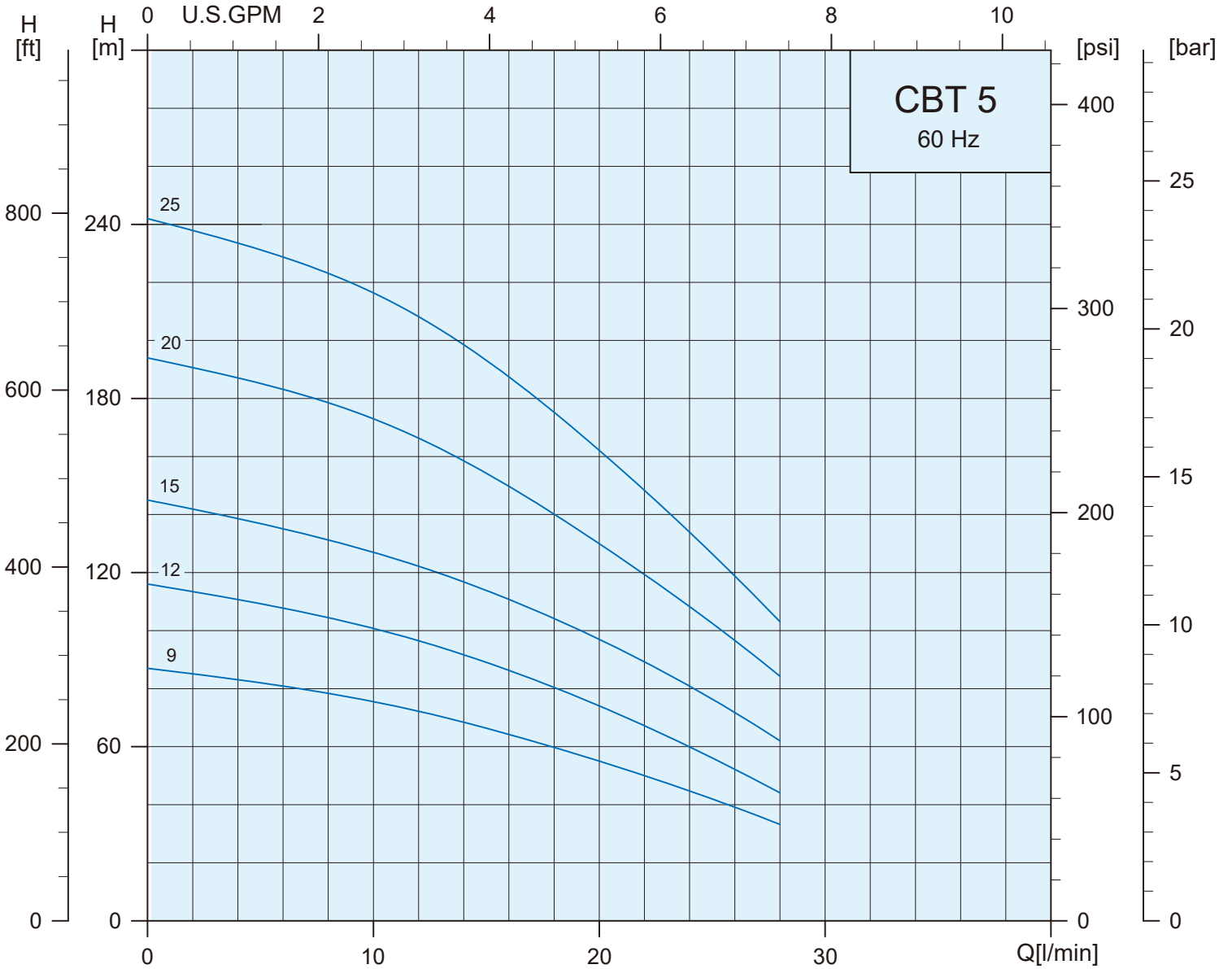
- Maximum Liquid Temperature: 50°C
- Suction/Discharge: 304 stainless steel.
- Pump Shaft: 304 stainless steel
- Impeller: Noryl
- Diffuser: Glass Filled Polycarbonate
- Mechanical seal: Carbon/Ceramic/NBR
- Suction port and discharge port both 1” simplifies installation and maintenance.

Motor

Pump is fitted with a totally enclosed, fan-cooled, squirrel-cage, asynchronous motor.

- 2-pole
- Enclosure class: IP54
- Insulation class: F
- 60HZ, 3500 RPM.
- Single phase : 0.75~1.0HP, 110~127 / 208~230V & 1.5~3.0HP, 208~230V
- Three phase : 208~230V / 380~480V (IE3)

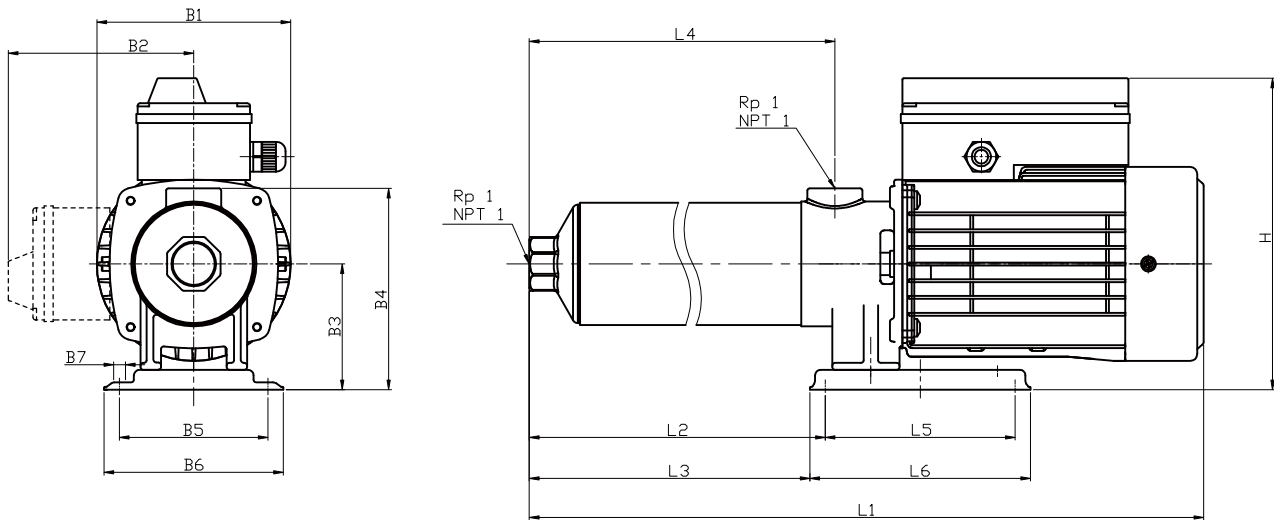
Performance Range



Specifications

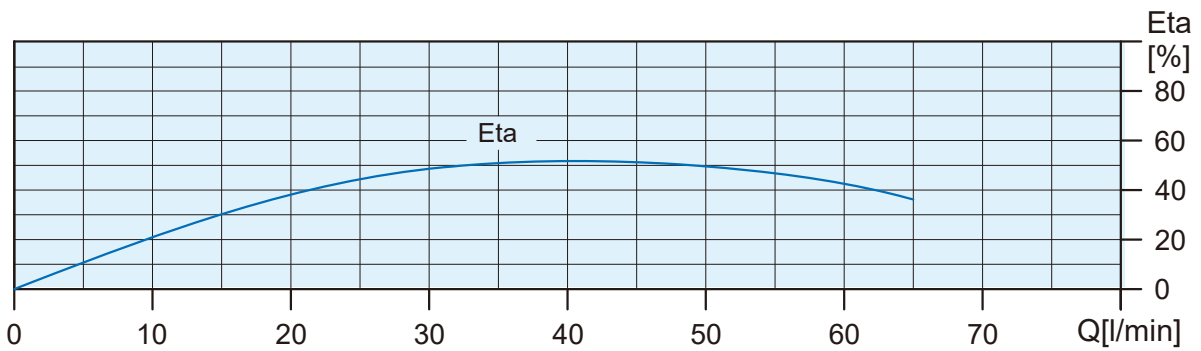
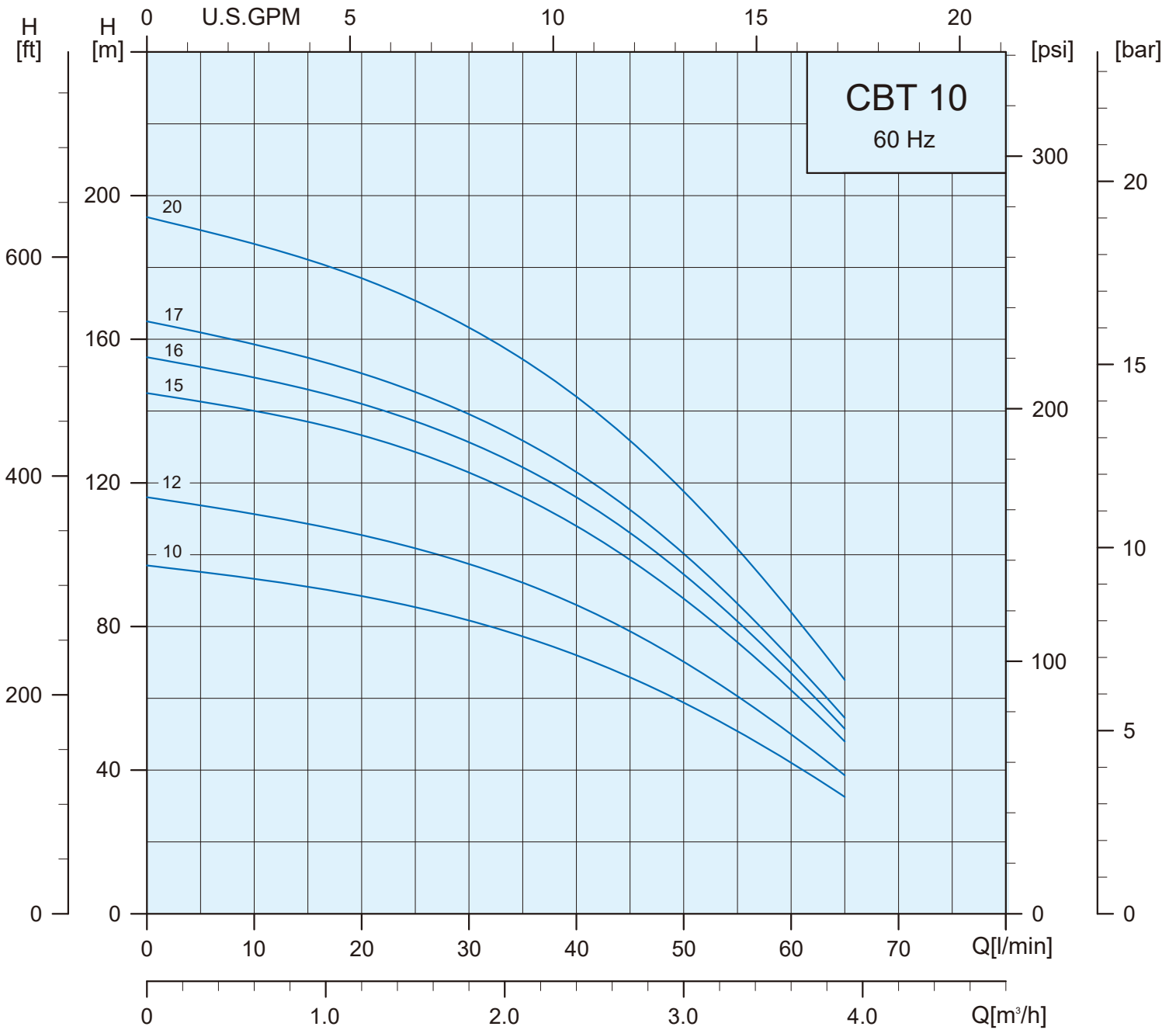
MODEL	P ₂		Head		Flow	Max.Amp [A]	
	HP	kW	Rated (m)	MAX. (m)	Rated (l/min)	1 X 110 - 127 / 208 - 230V	1 X 208 - 230V
CBT 5-9	0.75	0.55	55	87	20	7.9 - 8.8 / 4.3 - 4	-
CBT 5-12	1	0.75	74	116		10.4 - 13.1 / 5.3 - 5.4	-
CBT 5-15	1.5	1.1	97	145		-	6.9 - 7.5
CBT 5-20	1.5	1.1	130	194		-	9.0 - 9.3
CBT 5-25	2	1.5	162	242		-	10.5 - 9.5

Dimensions and Weight



pump type	motor			Dimensions (mm)														
	phase	P ₂		L1	L2	L3	L4	L5	L6	B1	B2	B3	B4	B5	B6	B7	H	Kg
		HP	kW															
CBT 5-09	1Ø	0.75	0.55	567	330	319	337	138	160	141	136	92	147	108	130	Ø8.5	228	11.6
CBT 5-12	1Ø	1	0.75	658	383	372	390	138	160	141	136	92	147	108	130	Ø8.5	228	13.6
CBT 5-15	1Ø	1.5	1.1	711	436	425	443	138	160	141	136	92	147	108	130	Ø8.5	228	15.4
CBT 5-20	1Ø	1.5	1.1	799	524	513	531	138	160	141	136	92	147	108	130	Ø8.5	228	16.2
CBT 5-25	1Ø	2	1.5	967	649	629	620	195	235	177	152	121	177	158	178	Ø10	274	25.2

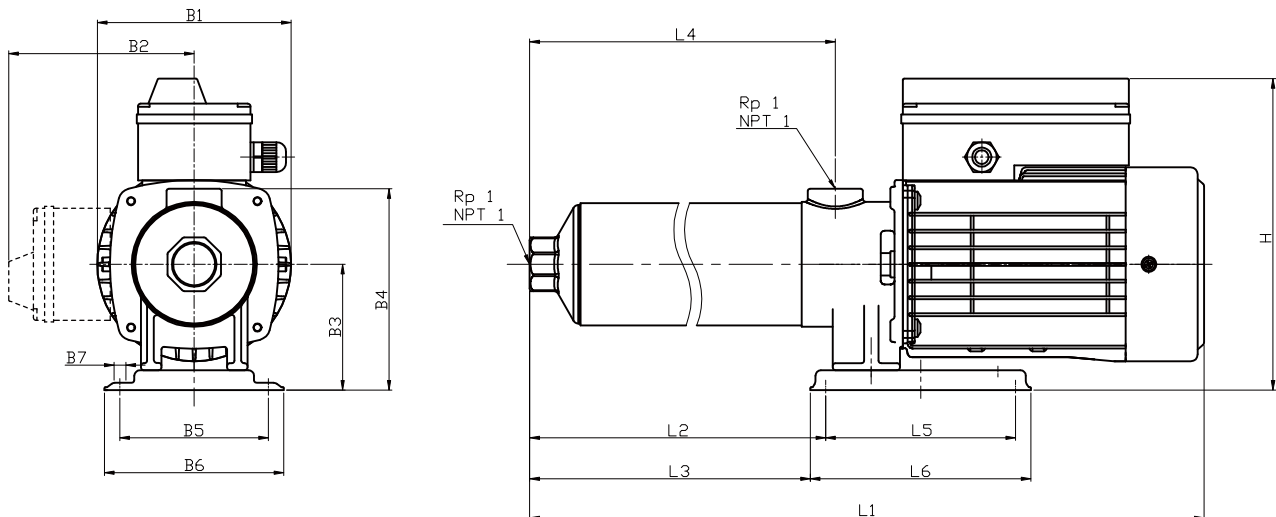
Performance Range



Specifications

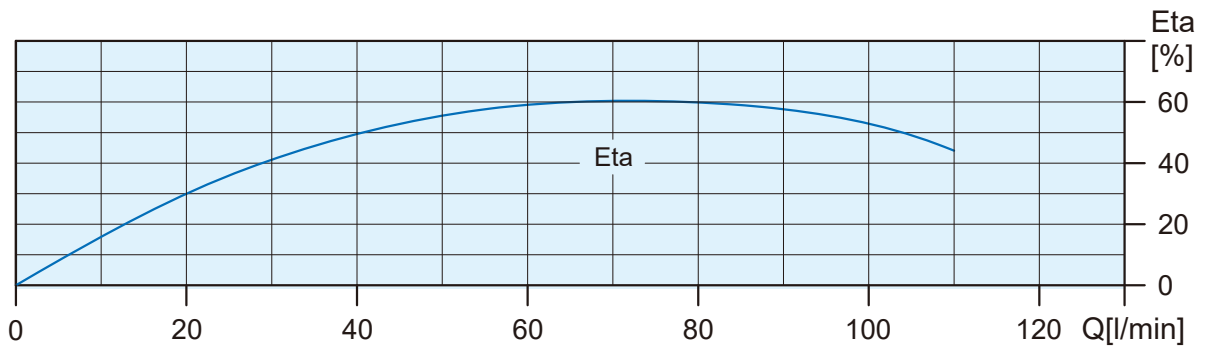
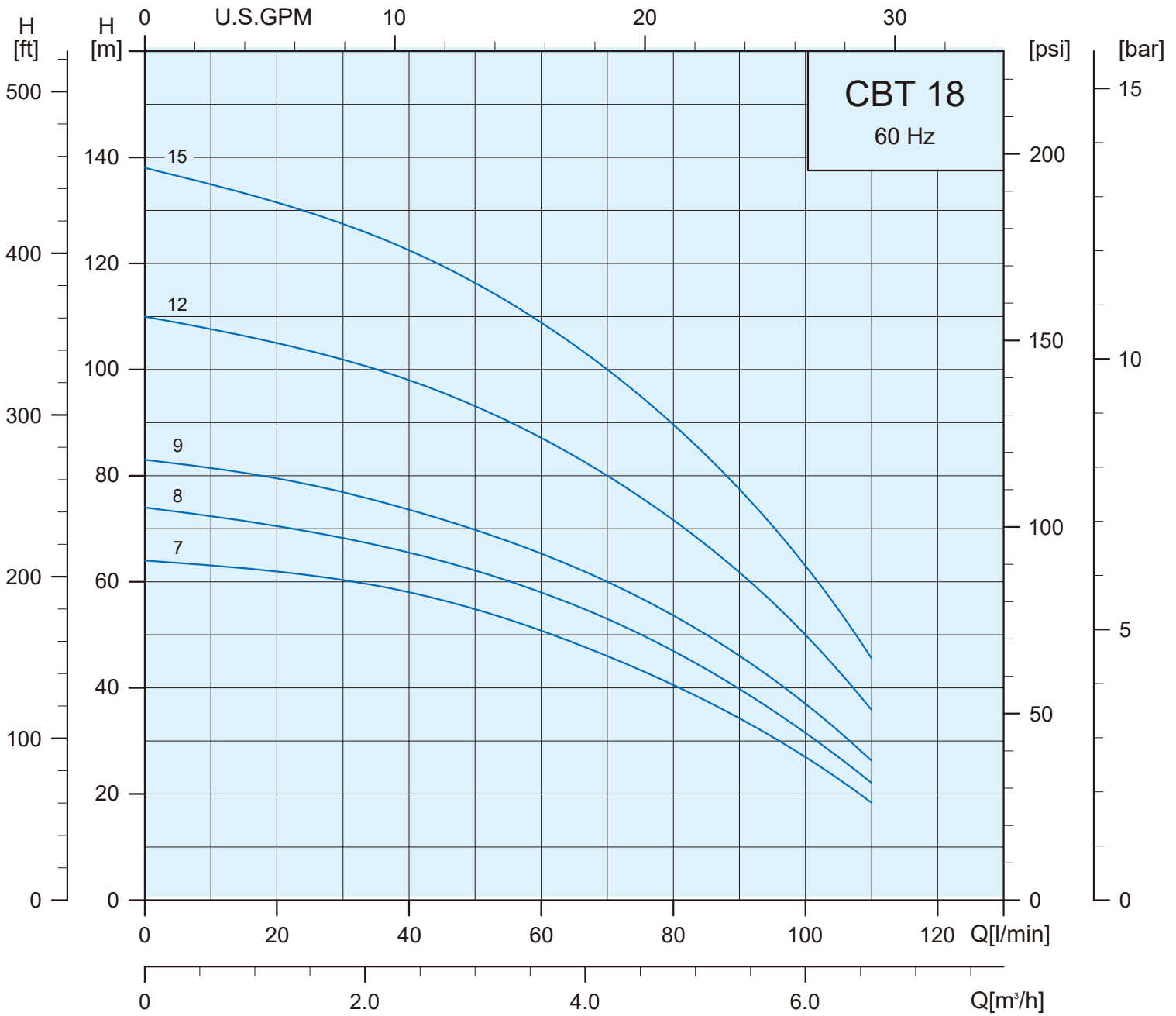
MODEL	P ₂		Head		Flow Rated (l/min)	Max.Amp [A]	
	HP	kW	Rated (m)	MAX. (m)		1 X 110 - 127 / 208 - 230V	1 X 208 - 230V
CBT 10-10	1.5	1.1	72	97	40	-	7.1 - 7.9
CBT 10-12	2	1.5	86	116		-	8.3 - 7.6
CBT 10-15	2	1.5	108	145		-	9.8 - 9.0
CBT 10-16	3	2.2	116	155		-	11.0 - 9.9
CBT 10-17	3	2.2	123	165		-	11.3 - 10.4
CBT 10-20	3	2.2	144	194		-	12.8 - 11.7

Dimensions and Weight



pump type	motor			Dimensions (mm)														
	phase	HP	kW	L1	L2	L3	L4	L5	L6	B1	B2	B3	B4	B5	B6	B7	H	Kg
CBT 10-10	1Ø	1.5	1.1	624	349	338	356	138	160	141	136	92	147	108	130	Ø8.5	228	14.4
CBT 10-12	1Ø	2	1.5	737	419	399	390	195	235	177	152	121	177	158	178	Ø10	274	22.6
CBT 10-15	1Ø	2	1.5	790	472	452	443	195	235	177	152	121	177	158	178	Ø10	274	23.2
CBT 10-16	1Ø	3	2.2	808	490	470	461	195	235	177	152	121	177	158	178	Ø10	274	26.8
CBT 10-17	1Ø	3	2.2	825	507	487	478	195	235	177	152	121	177	158	178	Ø10	274	27.0
CBT 10-20	1Ø	3	2.2	878	560	540	531	195	235	177	152	121	177	158	178	Ø10	274	27.6

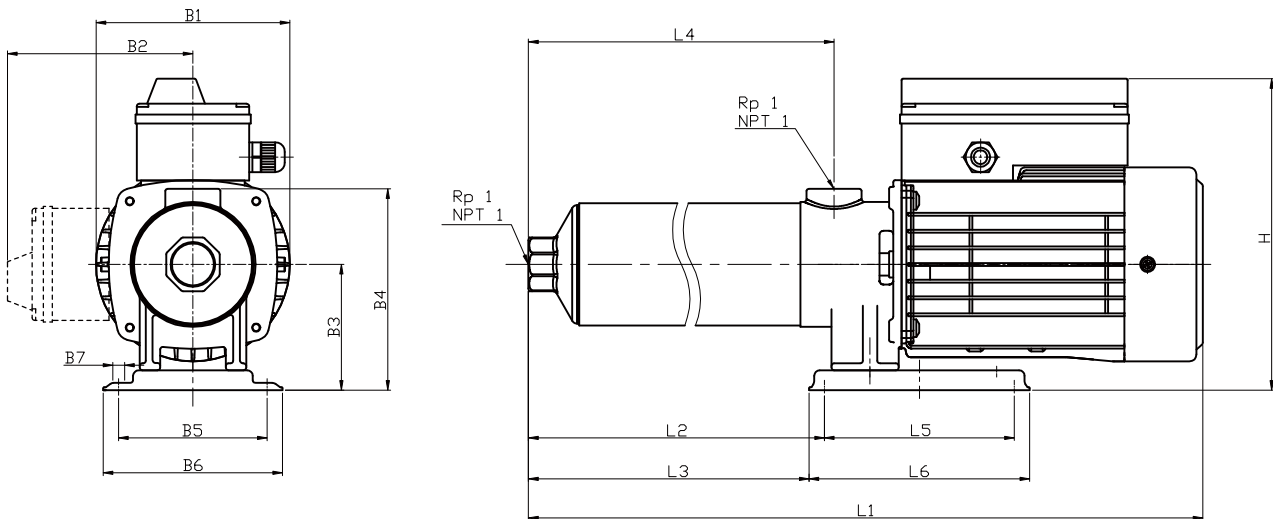
Performance Range



Specifications

MODEL	P2		Head		Flow	Max.Amp [A]	
	HP	kW	Rated (m)	MAX. (m)	Rated (l/min)	1 X 110 - 127 / 208 - 230V	1 X 208 - 230V
CBT 18-7	1	0.75	46	64	70	12.7 - 14.1 / 6.7 - 6.4	-
CBT 18-8	1.5	1.1	53	74		-	7.8 / 8.2
CBT 18-9	1.5	1.1	60	83		-	8.6 / 8.8
CBT 18-12	3	2.2	80	110		-	11.5 / 10.4
CBT 18-15	3	2.2	100	138		-	13.7 / 12.5

Dimensions and Weight



pump type	motor			Dimensions (mm)														
	P2			L1	L2	L3	L4	L5	L6	B1	B2	B3	B4	B5	B6	B7	H	Kg
	phase	HP	kW															
CBT 18-07	1Ø	1	0.75	598	323	312	330	138	160	141	136	92	147	108	130	Ø8.5	228	12.8
CBT 18-08	1Ø	1.5	1.1	620	345	334	352	138	160	141	136	92	147	108	130	Ø8.5	228	14.3
CBT 18-09	1Ø	1.5	1.1	642	367	356	374	138	160	141	136	92	147	108	130	Ø8.5	228	14.5
CBT 18-12	1Ø	3	2.2	786	468	448	439	195	235	177	152	121	177	158	178	Ø10	274	26.6
CBT 18-15	1Ø	3	2.2	850	532	512	503	195	235	177	152	121	177	158	178	Ø10	274	28.2



 **STAIRS**

No. 3-8, Sanchial Tsun, Lutsao Hsiang, Chiayi County, Taiwan
Tel :+886 5 3750488 Fax:+886 5 3752330
www.stairs.com.tw E-mail:stairs@stairs.com.tw

1121222